

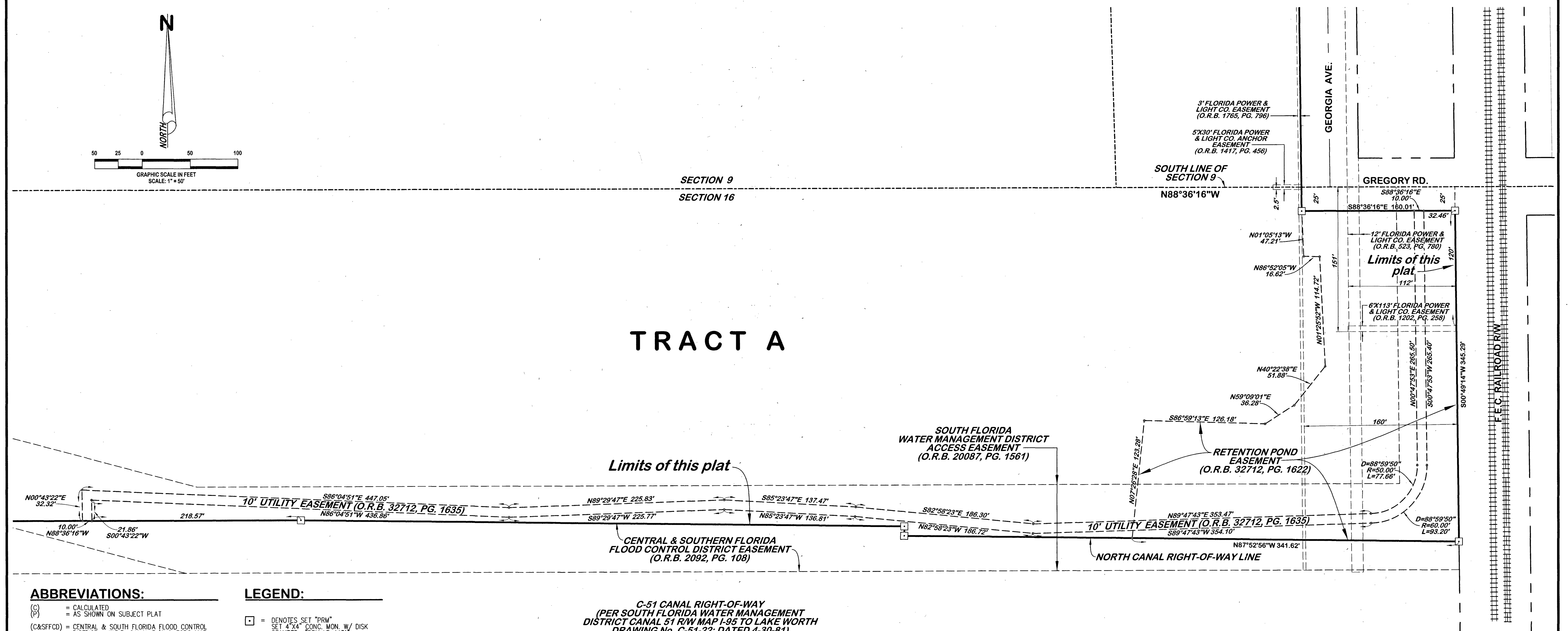
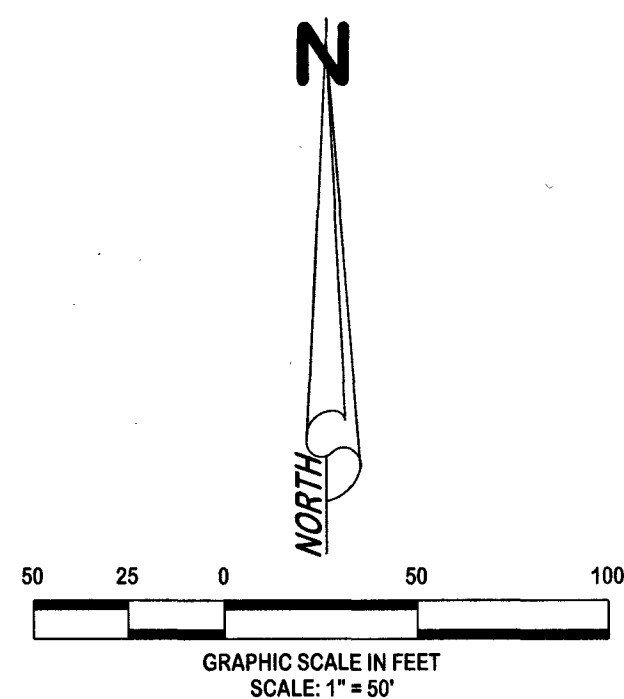
WEST PALM BEACH GOLF PARK

BEING A REPLAT OF A PORTION OF MARIMONT, AS SHOWN IN PLAT BOOK 14, PAGE 57 AND A REPLAT OF A PORTION OF MARIAN PARK, AS SHOWN IN PLAT BOOK 4, PAGE 52, AND A REPLAT OF A PORTION OF WOODLAWN, AS SHOWN IN PLAT BOOK 10, PAGE 41, PUBLIC RECORDS OF PALM BEACH COUNTY, FLORIDA AND A PORTION OF THE NORTH 120 FEET OF GOVERNMENT LOT 3, SECTION 9, TOWNSHIP 44 SOUTH, RANGE 43 EAST AND A PORTION OF GOVERNMENT LOTS 1 AND 2, SECTION 16, TOWNSHIP 44 SOUTH, RANGE 43 EAST LYING NORTH OF THE NORTH CANAL RIGHT-OF-WAY LINE OF THE SOUTH FLORIDA WATER MANAGEMENT DISTRICT C-51 CANAL CITY OF WEST PALM BEACH, PALM BEACH COUNTY, FLORIDA

JANUARY 2023

93

SHEET 8 OF 9



- ABBREVIATIONS:**
- (C) = CALCULATED
 - (P) = AS SHOWN ON SUBJECT PLAT
 - (C&SFFCD) = CENTRAL & SOUTH FLORIDA FLOOD CONTROL DISTRICT - W.P.B. CANAL R/W & TOPO MAP DRAWING No.: WPB-3 - DATED: 10-31-56
 - (GRID) = STATE PLANE GRID BEARINGS & DISTANCES
 - (SFWMD) = SOUTH FLORIDA WATER MANAGEMENT DISTRICT CANAL 51 R/W MAP I-95 TO LAKE WORTH DRAWING No.: C-51-22 - DATED: 3-20-81
 - D = CURVE'S DELTA ANGLE
 - R = CURVE'S RADIUS
 - L = CURVE'S ARC LENGTH
 - CB = CURVE'S CHORD BEARING
 - CONC. = CONCRETE
 - D.B. = DEED BOOK
 - DWG. = DRAWING
 - F.E.C. = FLORIDA EAST COAST
 - FND. = FOUND
 - FPL = FLORIDA POWER & LIGHT CO.
 - MON. = MONUMENT
 - O.R.B. = OFFICIAL RECORD BOOK
 - P.B. = PLAT BOOK
 - P.B.Co. = PALM BEACH COUNTY, FLORIDA
 - PG. = PAGE
 - PGS. = PAGES
 - PRM = PERMANENT REFERENCE MONUMENT
 - R/W = RIGHT-OF-WAY
 - W/ = WITH

- LEGEND:**
- = DENOTES SET "PRM" SET 4"x4" CONC. MON. W/ DISK STAMPED "PRM LB 4431" UNLESS OTHERWISE NOTED
 - = DENOTES SET "PRM" SET MAG NAIL & DISK STAMPED "PRM LB 4431" UNLESS OTHERWISE NOTED

C-51 CANAL RIGHT-OF-WAY (PER SOUTH FLORIDA WATER MANAGEMENT DISTRICT CANAL 51 R/W MAP I-95 TO LAKE WORTH DRAWING No. C-51-22; DATED 4-30-81)

SOUTH FLORIDA WATER MANAGEMENT DISTRICT CANAL 51

DETAIL SHEET

LIDBERG LAND SURVEYING, INC.
 675 West Indiantown Road, Suite 200, Jupiter, Florida 33458 TEL. 561-746-8454

LB4431

CAD. K:\JUST \ 094443 \ 14-57 \ 20-061 \ 20-061-306 \ 20-061-306.DGN			
REF.			
FLD. _____	FB. _____	PG. _____	JOB 20-061-306
OFF. C/SASUS			DATE JANUARY 2023
CKD. D.C.L.	SHEET 8 OF 9	DWG. D20-061P	